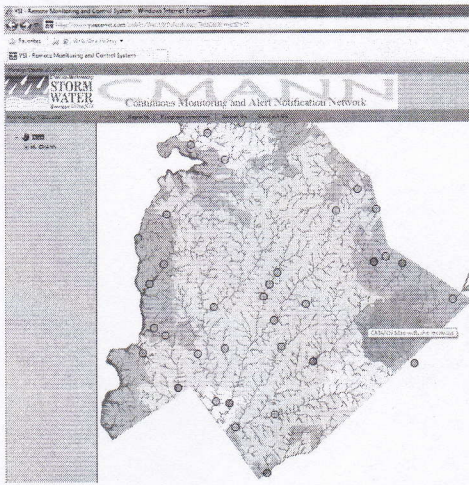


Water Quality in Streams in Mecklenburg County

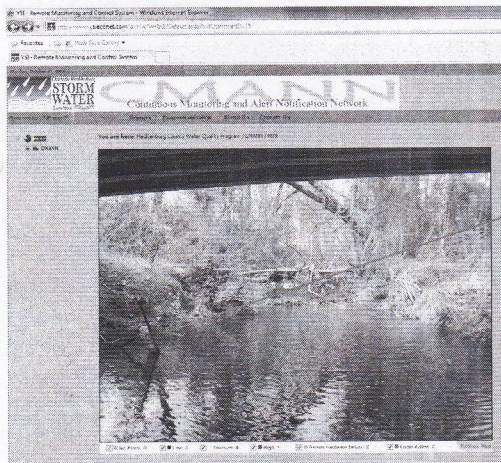
Go to this website:

<http://www.ysieconet.com/public/WebUI/Default.aspx?hidCustomerID=75>

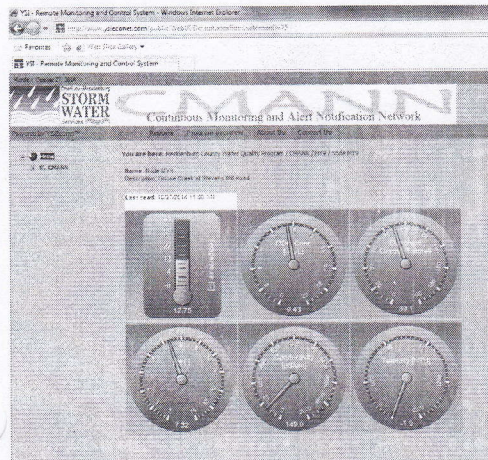
Click on one of the dots on the map. The location/address of the data logger will appear.



A picture of the actual data logger will appear. Look for the green or red dot on the picture and Click on it.



Six different monitored water quality meters will appear.



Click on a meter and a data table and graph will appear. The dates can be changed. This is great for examining change over time.

